

## Roofing Profile

# Metalbenz Batten Lock Seam Panel

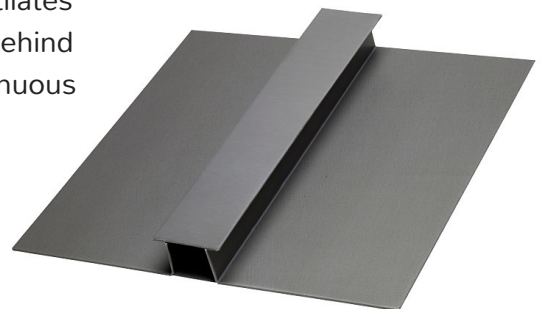
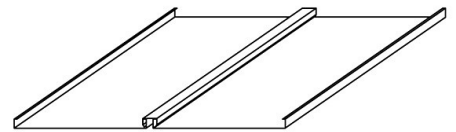


Use this profile with a wide range of metals

Metalbenz fabricates a traditional panel known as a 'batten lock' or 'roll cap' panel. This is a roof system with a wider ridge or bay, and a metal cap. A metal panel with upstands each side is laid on plywood with a metal or wooden batten in between. A metal capping is then laid over the bay giving the roll cap system a robust appearance.

## Factors

- Panel Width:** 300 mm to 500 mm, with upstand of 40 – 60 mm.
- Panel Height:** 40 – 60 mm.
- Panel Length:** 0.5 – 6 m.
- Minimum pitch:** 5% or 3 degrees.
- Substrate:** Typically plywood (min 17 mm) with a recommended separating layer.
- Underlayer:** Placed between the metal skin and the substrate. Ventilates the substrate by creating a 40 mm continuous air gap behind the plywood. Ventilation openings are created as continuous openings at eaves and ridges.
- Variations:** Vertical, horizontal, diagonal, curved, concave, convex, tapered, dome-like.
- Benefits:** Traditional. Aesthetically robust.



**Metal** benz  
FABRICATION

[www.metalbenz.com.au](http://www.metalbenz.com.au)

Visit our website to see our full range of profiles for roofing and wall cladding. We also custom fabricate flashings, rainwater systems and supply pre-fabricated systems.

Phone: 02 9986 0891