

# Cladding Profile

## Metalbenz Snap Lock Seam Panel



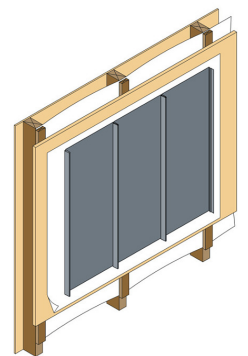
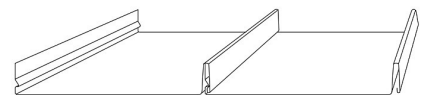
Use this profile with a wide range of metals

Metalbenz fabricates the snap lock panel which is a profile of the standing seam family. It differs from the traditional standing seam by its higher ribs and the longitudinal joining technique. Much faster and simpler to install, it can be a more economical solution, particularly on large simple roof surfaces.

The panel has an upstand either side, where the left upstand of one panel fits closely into the right upstand of another. The panel is simply snapped or pushed together rather than seamed and requires no additional seam closing tools or machines, nor any additional labour to close the seams, lending to the name 'snap lock' (also known as 'ribbon tray'). The right upstand of a panel is secured to the roof with clips, and the left upstand of the next panels is placed over the secured upstand, and snapped into place, concealing the fixing and providing a rain proof cover.

### Factors

- Panel Width:** 555 mm (copper/zinc) and 485 mm (Colorbond®, aluminium) (all other widths available on request).
- Panel Height:** 38 mm.
- Panel Length:** Max. 6m (discuss longer lengths with us).
- Substrate:** Typically plywood (min 12 mm but consider clips/fixings must be into a substantial backing) with a recommended separating layer.
- Underlayer:** Placed between the metal skin and the substrate. Ventilates the substrate by creating a 20 mm continuous air gap behind the plywood. Ventilation openings are created as continuous openings at top and bottom.
- Variations:** Horizontal, vertical, diagonal, tapered 2 male seams/2 female seams (start and end panels).  
Can be installed on curved structures eg vertical on a horizontally curving structure.
- Benefits:** Standing seam look, fast installation, light weight.



**Metal** benz  
FABRICATION

[www.metalbenz.com.au](http://www.metalbenz.com.au)

Visit our website to see our full range of profiles for roofing and wall cladding. We also custom fabricate flashings, rainwater systems and supply pre-fabricated systems.

Phone: 02 9986 0891