

Cladding Profile

Metalbenz Single Lock Standing Seam Panel



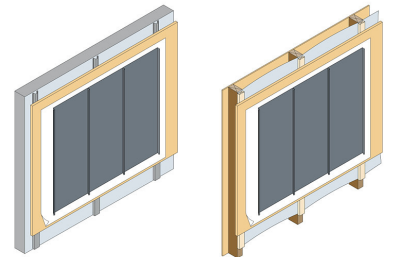
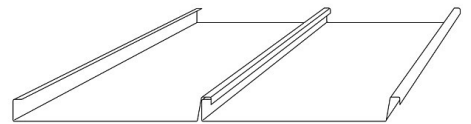
Use this profile with a wide range of metals

Metalbenz fabricates a panel with an upstand, commonly known as a 'standing seam'. Single standing seam is where the seam is folded once (generally for walls). Double standing seam is where the seam is folded twice (generally for roofs).

The panel has a male and a female side where the male rib of one panel fits closely into the female rib of the adjacent panel. The male upstand of a panel is secured to the roof with clips, and the female upstand of the next panel is placed over the secured upstand, then the seams are closed with suitable seam-closing tools or machines, concealing the fixing and providing a rain proof cover.

Factors

- Panel Width:** 430 mm (zinc) and 530 mm (copper, Colorbond®, aluminium) (all other widths available on request).
- Panel Height:** 25 mm and 38 mm.
- Panel Length:** Max. 13 m (contact us if longer lengths required).
- Substrate:** Typically plywood (min 17 mm) with a recommended separating layer.
- Underlayer:** Placed between the metal skin and the substrate. Ventilates the substrate by creating a 20 mm continuous air gap behind the plywood. Ventilation openings are created as continuous openings at eaves and ridges.
- Variations:** Vertical, horizontal, diagonal, curved, concave, convex, tapered, dome-like 2 male seams/2 female seams (start and end panels).
- Benefits:** Creative design possibilities.
Suitable for small and large scale installations.



Metal benz
FABRICATION

www.metalbenz.com.au

Visit our website to see our full range of profiles for roofing and wall cladding. We also custom fabricate flashings, rainwater systems and supply pre-fabricated systems.

Phone: 02 9986 0891