

Cladding Profile

Metalbenz Cassette Panel

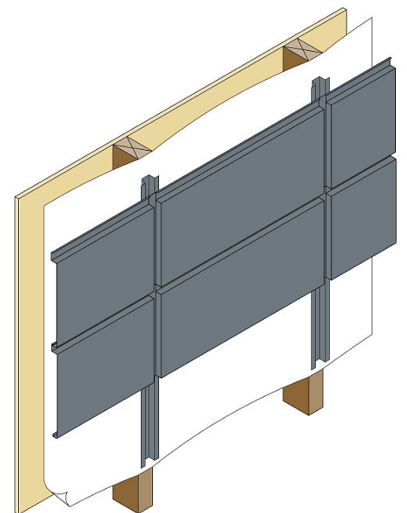


Use this profile with a wide range of metals

Metalbenz fabricates a panel with a recessed joint known as a 'cassette' panel. The left fold is indirectly fixed to the metal substrate with clips and the right recessed fold is married/overlapped to the next left side of the panel and fixed again with concealed clips.

Factors

- Panel Width:** 200 mm – 300 mm, custom sizes available on request.
- Panel Height:** 25 mm.
- Panel Length:** Max. recommended length horizontal 4 m.
- Shadow gaps:** 1 mm – 25 mm.
- Joint:** 15 mm – 25 mm.
- Substrate:** Steel top hats fixed to wall and aluminium brackets over breather type sarking.
- Variations:** Horizontal wall, soffit.
- Benefits:**
 - The cassette panel, when installed, is a simplistic pattern. This makes it efficient for larger scale cladding.
 - It adheres to the rainscreen principle, thereby allowing for moisture run off and evaporation, and therefore is commonly used on high rise applications.
 - Precise and uniform sizing with 0.5 mm tolerances can be achieved with use of high quality roll forming machines.
 - Custom made to suit varying and individual measurements on each project.
 - Light weight.



Metal benz
FABRICATION

www.metalbenz.com.au

Visit our website to see our full range of profiles for roofing and wall cladding. We also custom fabricate flashings, rainwater systems and supply pre-fabricated systems.

Phone: 02 9986 0891